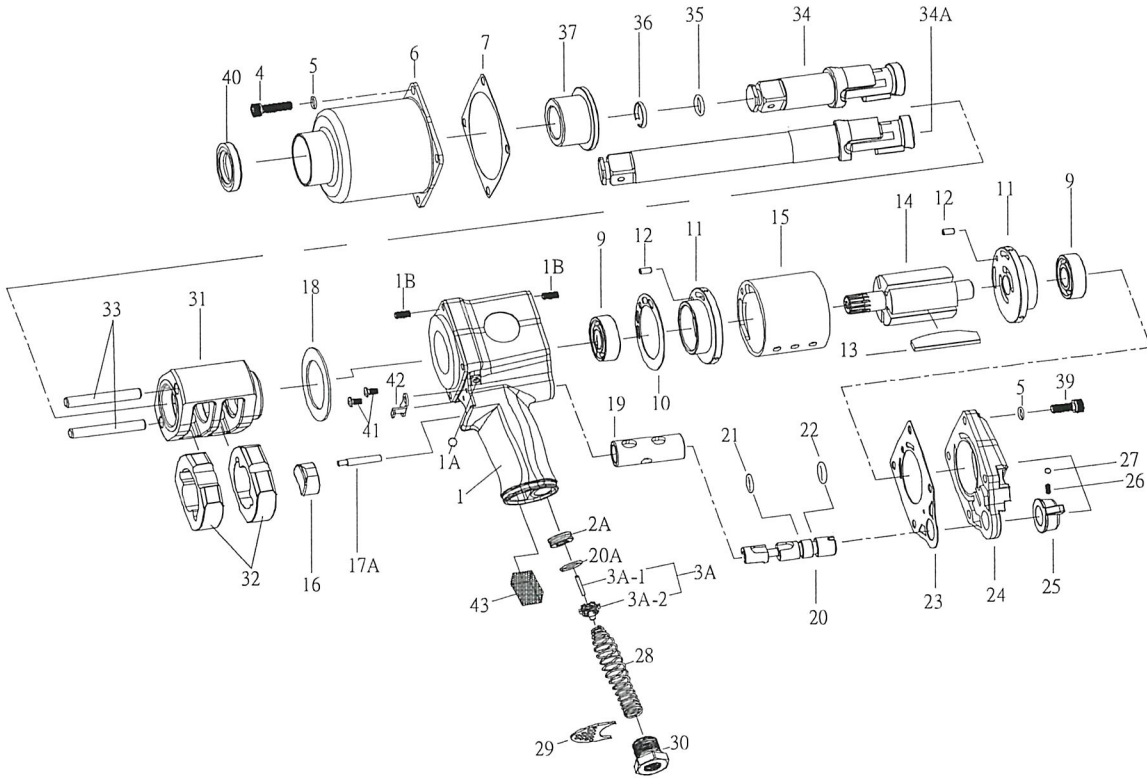


160494

3/4" SQ. DR.SUPER DUTY IMPACT WRENCH



KI-23/23-6

INDEX NO.	DESCRIPTION	REQ'D NO.	FOB		INDEX NO.	DESCRIPTION	REQ'D NO.	FOB	
			(US\$/PC)	(US\$/SET)				(US\$/PC)	(US\$/SET)
★ 1	Housing Assembly (incl.1A.1B( 8 ).19)	1	-		21	O-Ring	1		
● 1A	Steel Ball	2			22	O-Ring	1		
● 1B	Heli-coil	8			23	Gasket	1		
2A	Throttle Valve Seat	1			24	Backhead	1		
★ 3A	Throttle Valve Assembly (incl.3A-1.3A-2)	1			25	Reverse Valve Knob	1		
● 3A-1	Throttle Valve Pin	1			26	Spring	1		
● 3A-2	Throttle Valve	1			27	Steel Ball	1		
★ 4	Screw Assembly { incl.5 ( 4 ) }	4			28	Spring	1		
● 5	Spring Washer	8			29	Exhaust Deflector	1		
6	Hammer Case	1			30	Air Inlet	1		
7	Gasket	1			31	Hammer Frame	1		
9	Ball Bearing	2			32	Hammer	2		
10	Gasket	1			33	Hammer Pin	2		
11	End Plate	2			34	Standard Anvil ( for KI-23 )	1		
12	Spring Pin	2			34A	6" Extended Anvil ( for KI-23-6 )	1		
13	Rotor Blade	5			35	O-Ring	1		
14	Rotor	1			36	Socket Retainer	1		
15	Cylinder	1			37	Bushing	1		
★ 16	Trigger Assembly (incl.17A)	1			★ 39	Screw Assembly { incl.5 ( 4 ) }	4		
● 17A	Trigger Pin	1			40	Oil Seal	1		
18	Washer	1			41	Screw	2		
● 19	Reverse Valve Bushing	1			42	Trigger Retainer	1		
20	Reverse Valve	1			43	Muffler Element	1		
20A	O-Ring	1			TK	Tune-Up Kit (7.9( 2 )10.13( 5 )20A.21.22.23.26.27.28.35.36.43)			US\$

★ Must be Purchased in Assembly Set

● Recommended not to be purchased alone due to assembly difficulty